



Features

- Three-Piece Bolted Body
- Full Port
- Lever Handle
- Blow-Out Proof Stem
- Adjustable Packing Nut
- Solder Joint Ends
- Conforms to Specifications of MSS-SP-110 and Federal Specification WW-V-35 Type II, Composition BZ, Style 1 and End Connection A



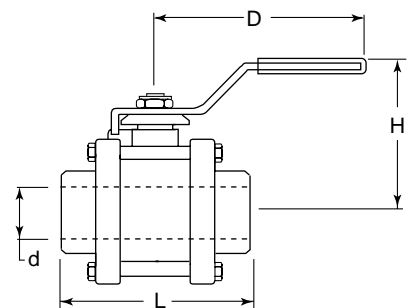
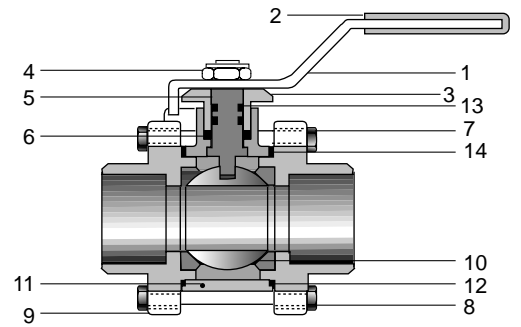
Working Pressures

Solder Used in Joints	Working Temp. Deg. F	Maximum Working Pressure (psi)		Test Pressure (psi)	
		1/2" - 1"	1-1/4" - 2"	Shell (Air)	Seat (Air)
95-5* Tin Antimony	100	500	400	100	100
	150	400	350		
	200	300	250		
	250	200	175		

*ASTM B32 Alloy Grade 95TA

Materials & Specifications

Item	Description	Material	Specification
1	Handle	Steel	ASTM A107-1020
2	Handle cover	PVC	
3	Gland screw	Brass rod	ASTM B16-C36000
4	Lock nut	Steel + nylon	ASTM A107-1020 + nylon
5	Stem	Brass rod	ASTM B16-C36000
6	Gland packing	PTFE	
7	Bolt	Steel	ASTM A107-1020
8	Nylon nut	Steel + nylon	ASTM A107-1020 + nylon
9	End cap	Bronze	ASTM B584-C84400
10	Ball	Forged Brass	ASTM B283-C37700
11	Body	Bronze	ASTM B584-C84400
12	Seat	PTFE	
13	O-ring	NBR	
14	Packing	PTFE	

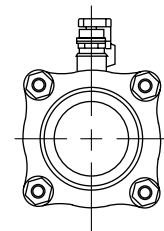


Dimensions & Weights (inches-lbs.)

Size	1/4	3/8	1/2	3/4	1	1-1/4	1-1/2	2	2-1/2	3	4
L	-	-	2.68	3.25	3.54	4.29	4.67	5.32	-	-	-
H	-	-	1.85	2.10	2.61	2.72	3.07	3.52	-	-	-
D	-	-	4.00	4.00	4.90	4.90	6.00	6.02	-	-	-
d	-	-	0.63	0.80	0.98	1.26	1.50	1.97	-	-	-
Wt.	-	-	1.08	1.56	2.34	3.08	4.74	7.46	-	-	-

Notes:

1. Dimensions of solder joint ends conform to ANSI B16.18.
2. The safe working pressure-temperature rating for a solder joint piping system is dependent, not only on fitting and tube strength, but also on the composition of the solder used for joints.



Ball